

FIRE EXTINGUISHER GAUGE

1.4" & 1.6" - Direct Drive Type

The Miljoco Fire Extinguisher Gauge is ideally suited for OEM installation on fire extinguishers of various sizes and capacities. This direct-drive, spiral tube gauge is designed for application using dry chemicals, water, A.F.F.F., Halon and Halon alternatives. This instrument contains a stainless steel bourdon tube assembly housed in a stainless steel case with a polycarbonate lens to protect against weather, dust and corrosion. The SP1498 & SP1698 can also be custom designed to meet almost any specific application requirement.

General Specifications

CASE: Stainless steel, weather-tight.

LENS: Polycarbonate.

DIAL: Aluminum.

POINTER: Stainless steel, yellow painted, integral to bourdon tube.

BOURDON TUBE: Stainless steel spiral.

CONNECTION: Brass or stainless steel, 1/8" NPT or 1/4" NPT back outlet.

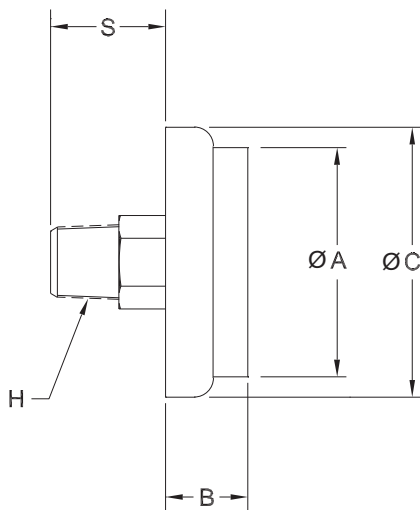
ACCURACY: ±3.5% of range span in center three-fifths of scale.

PROCESS TEMPERATURE: -40 to 200°F (-40 to 93°C).

AMBIENT TEMPERATURE: -40 to 140°F (-40 to 60°C).

LISTING: UL 299 for Fire Protection Industry.

Dimensions (in.)



Model	Dial Size	A	B	C	H	S
SP1498	1.4"	1.23	0.42	1.42	1/8" NPT	0.60
SP1698	1.6"	1.43	0.44	1.62	1/8" NPT	0.60

UL 299
Listed
for Fire
Protection
Industry



SP1498

Ranges

Code	Charge	Type	Full Span
F07D	100 psi	Disposable	180°
F07	100 psi	Rechargeable	235°
F08	195 psi	Rechargeable	235°

Many other ranges available for water, A.F.F.F., wet chemicals, and Halon - consult factory.

To Order

SP1498

Model Number

F07

Range Code

